



Drakeford Architects

120 North Main Street  
Sumter SC 29150 803 775-6567

Date October 1993

Revisions

Coastal Empire-  
Beaufort CMHC  
Facility

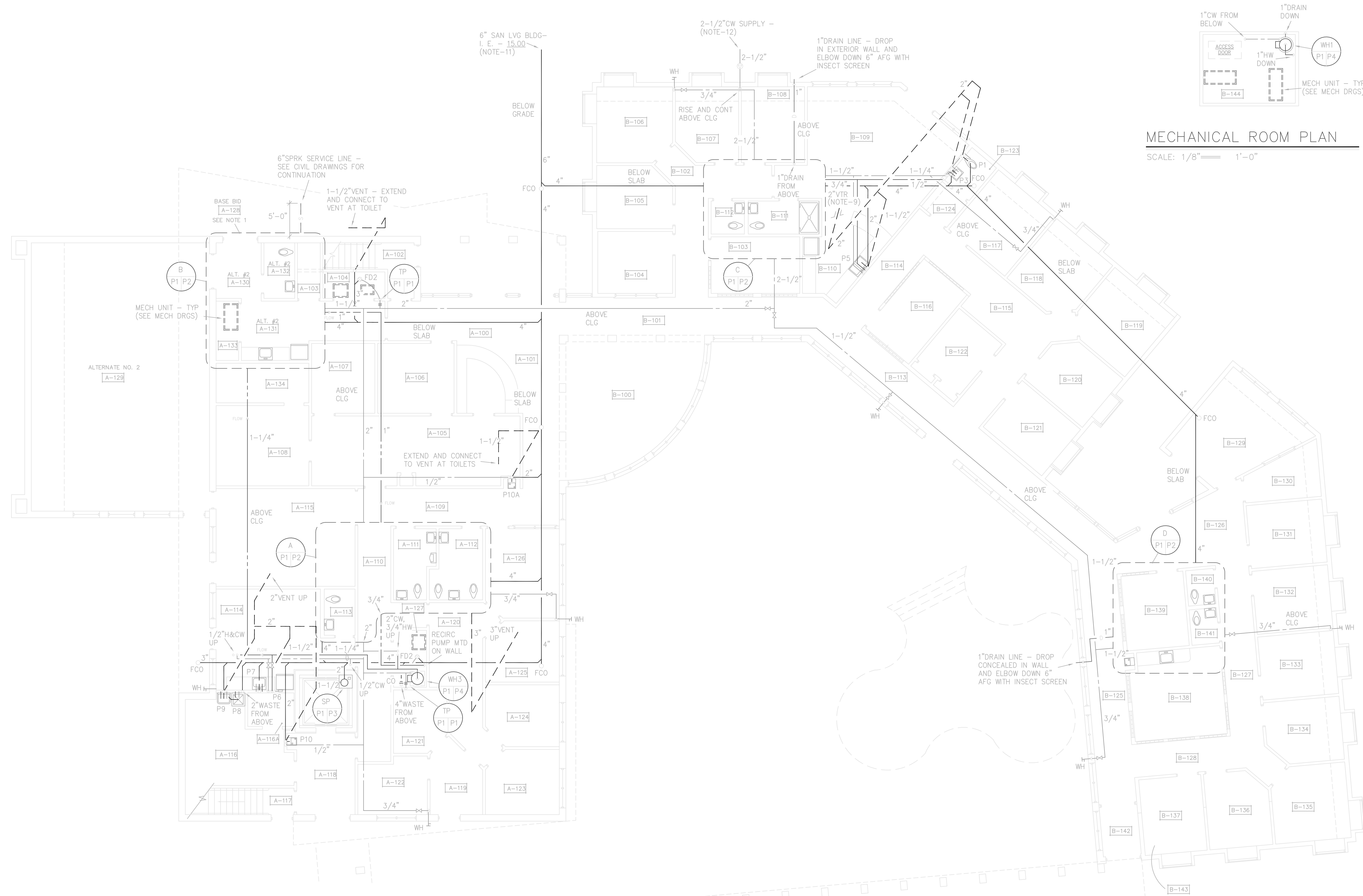
Beaufort, S.C.

Project No. J12-9565-PM

First Floor  
Plumbing Plan

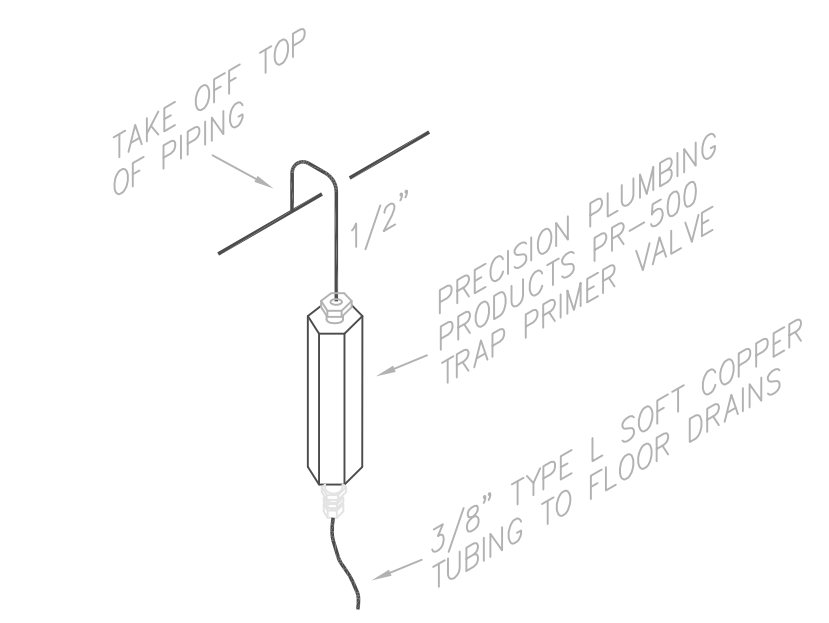
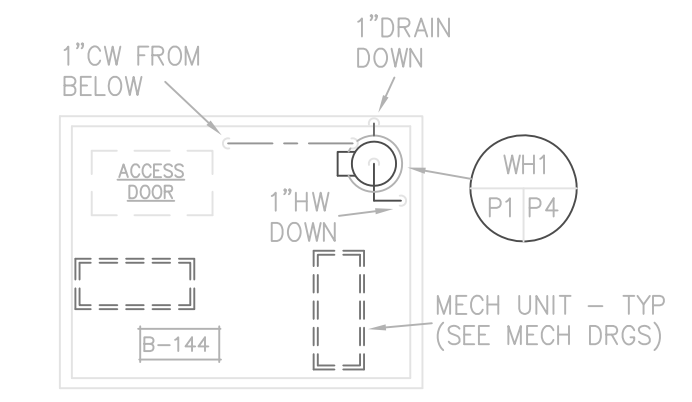
Scale: 1/8" = 1'-0"

Sheet P-1 of 4



**MECHANICAL ROOM PLAN**

SCALE: 1/8" = 1'-0"

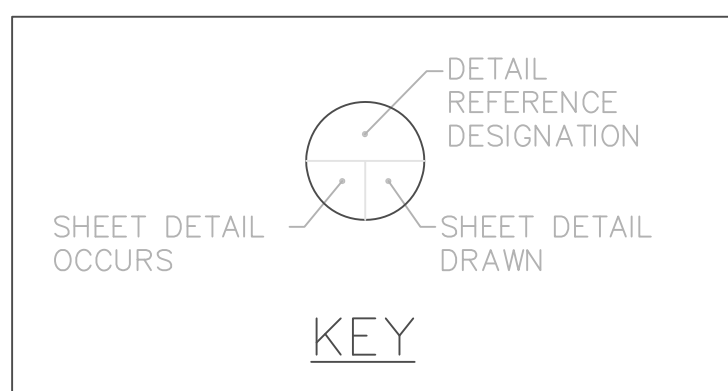


TP TRAP PRIMER VALVE  
P1 P1 NOT TO SCALE  
P2



**PLUMBING FLOOR PLAN (F.F. - 20.00)**

SCALE: 1/8" = 1'-0"





Drakeford Architects

120 North Main Street  
Sumter SC 29150 803 775-6567

Date October 1993

Revisions

Coastal Empire-  
Beaufort CMHC  
Facility

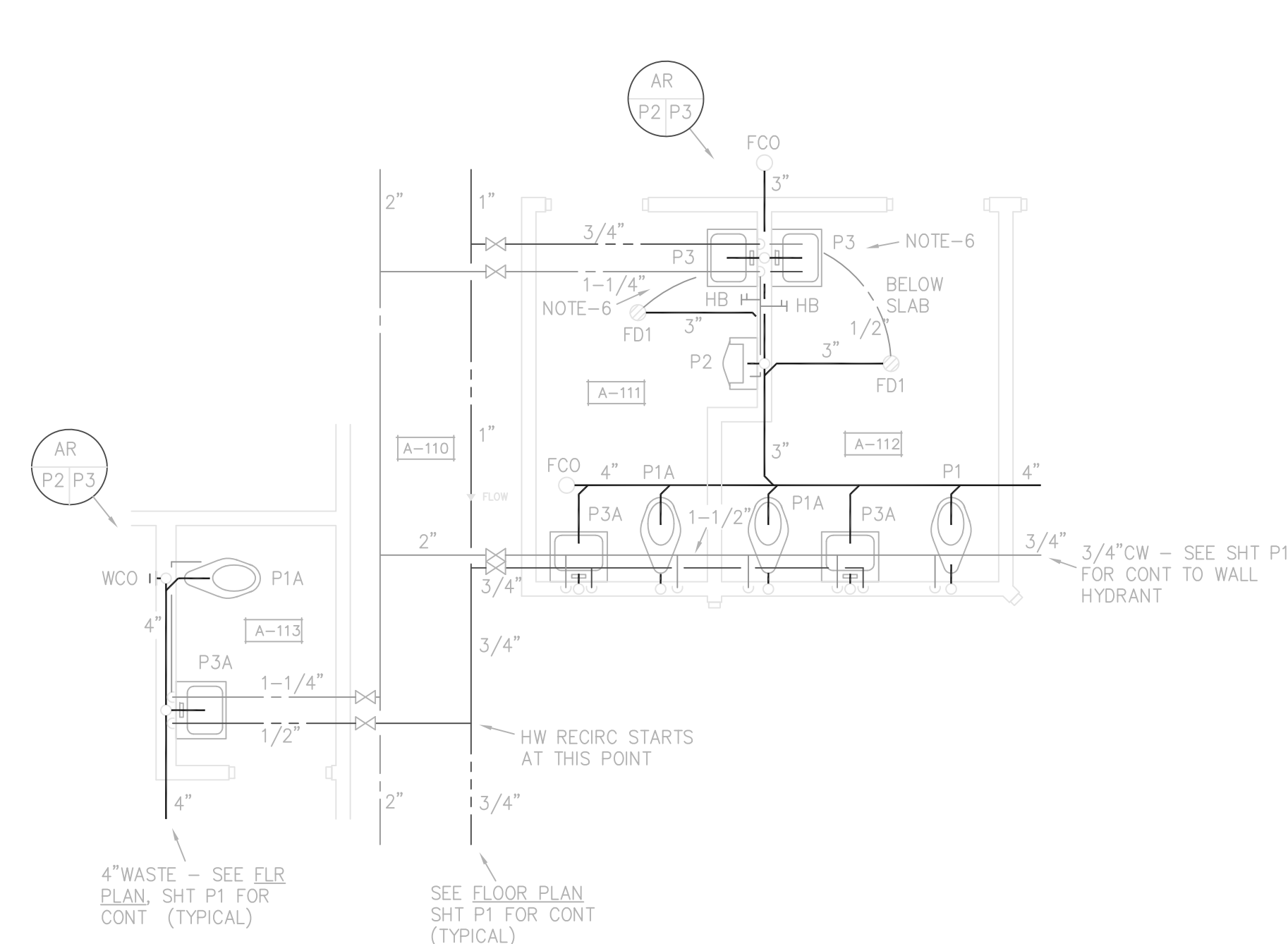
Beaufort, S.C.

Project No. J12-9565-PM

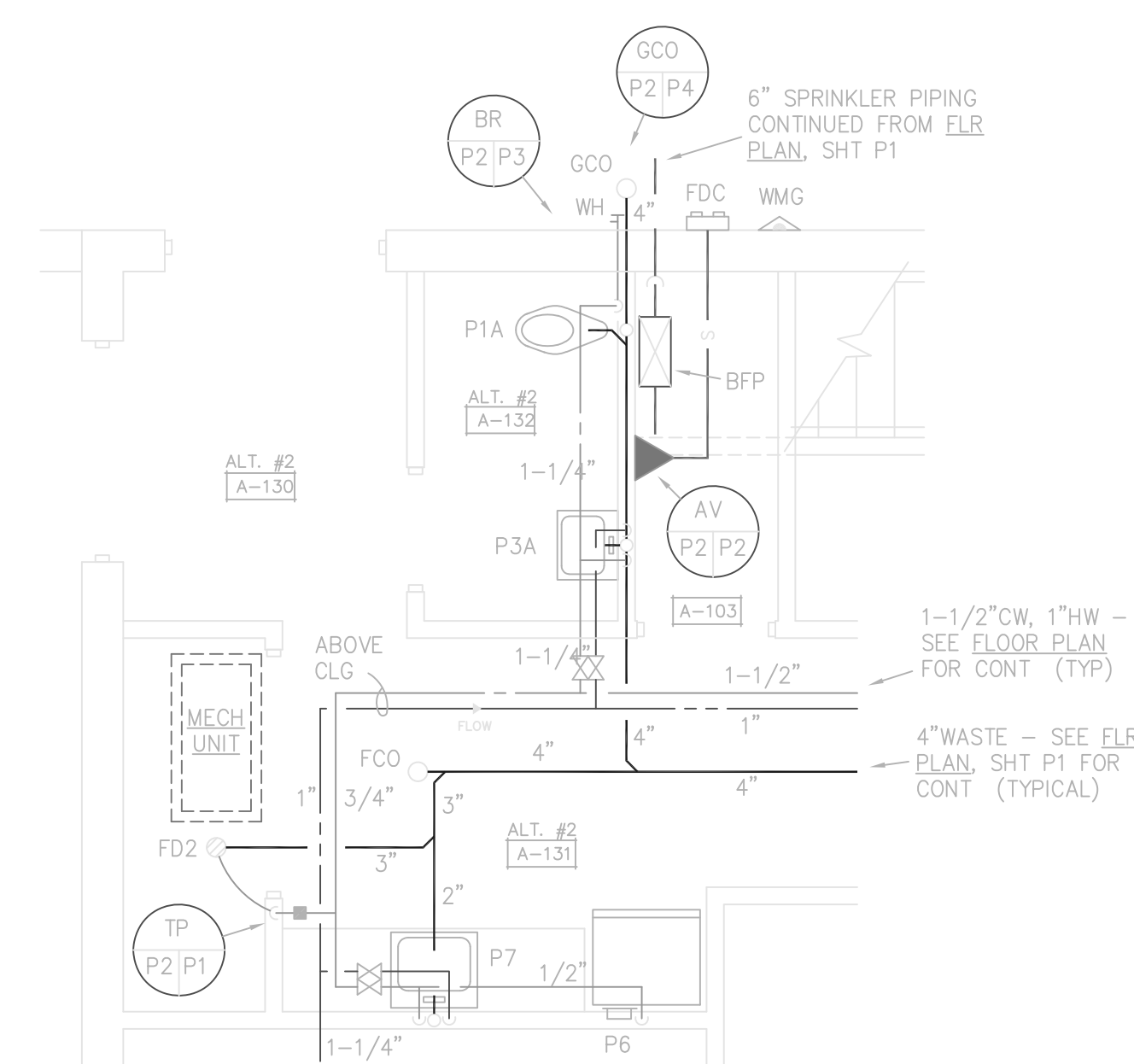
Second Floor  
Plumbing Plan

Scale: As Noted

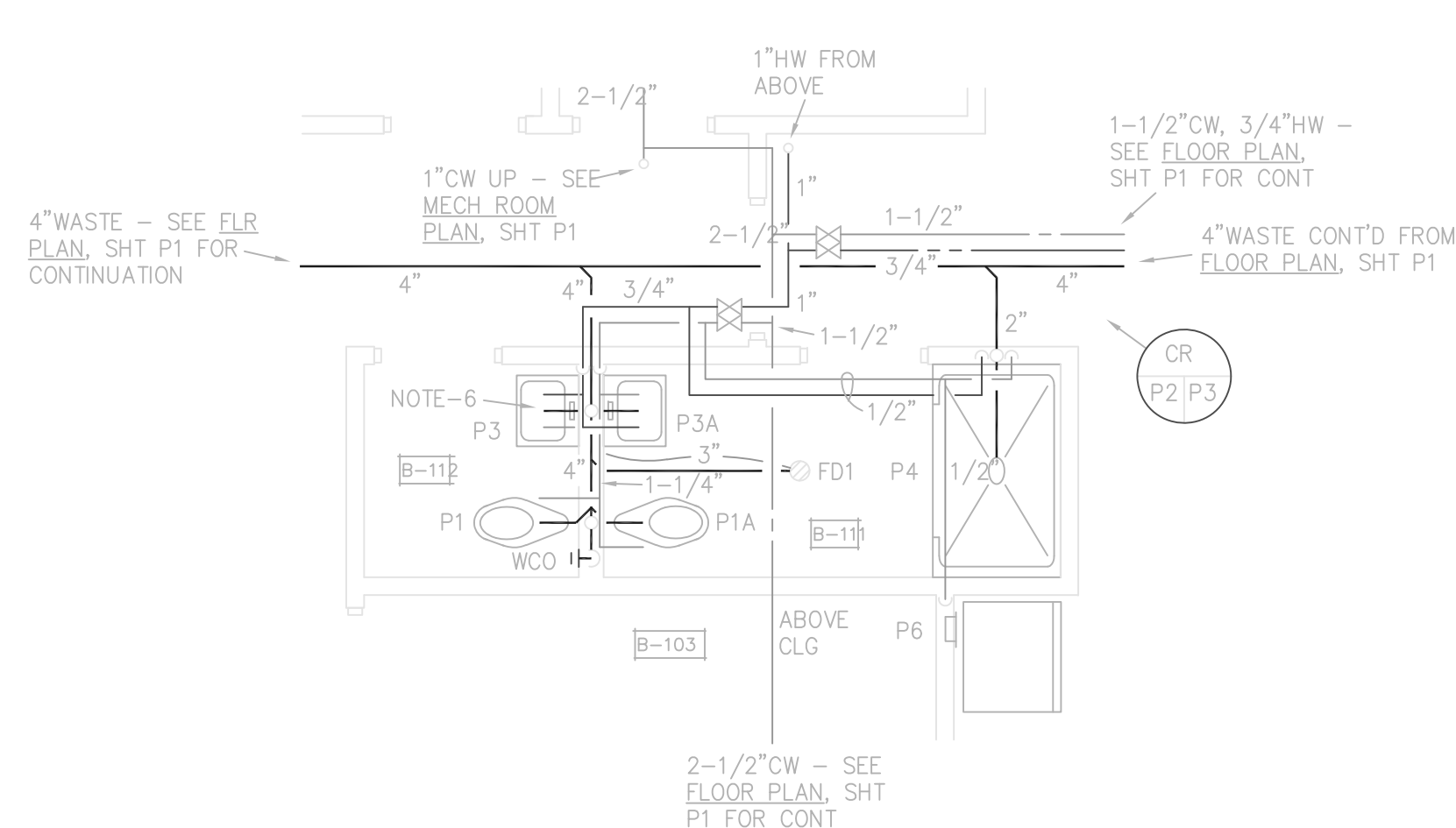
Sheet P-2 of 4



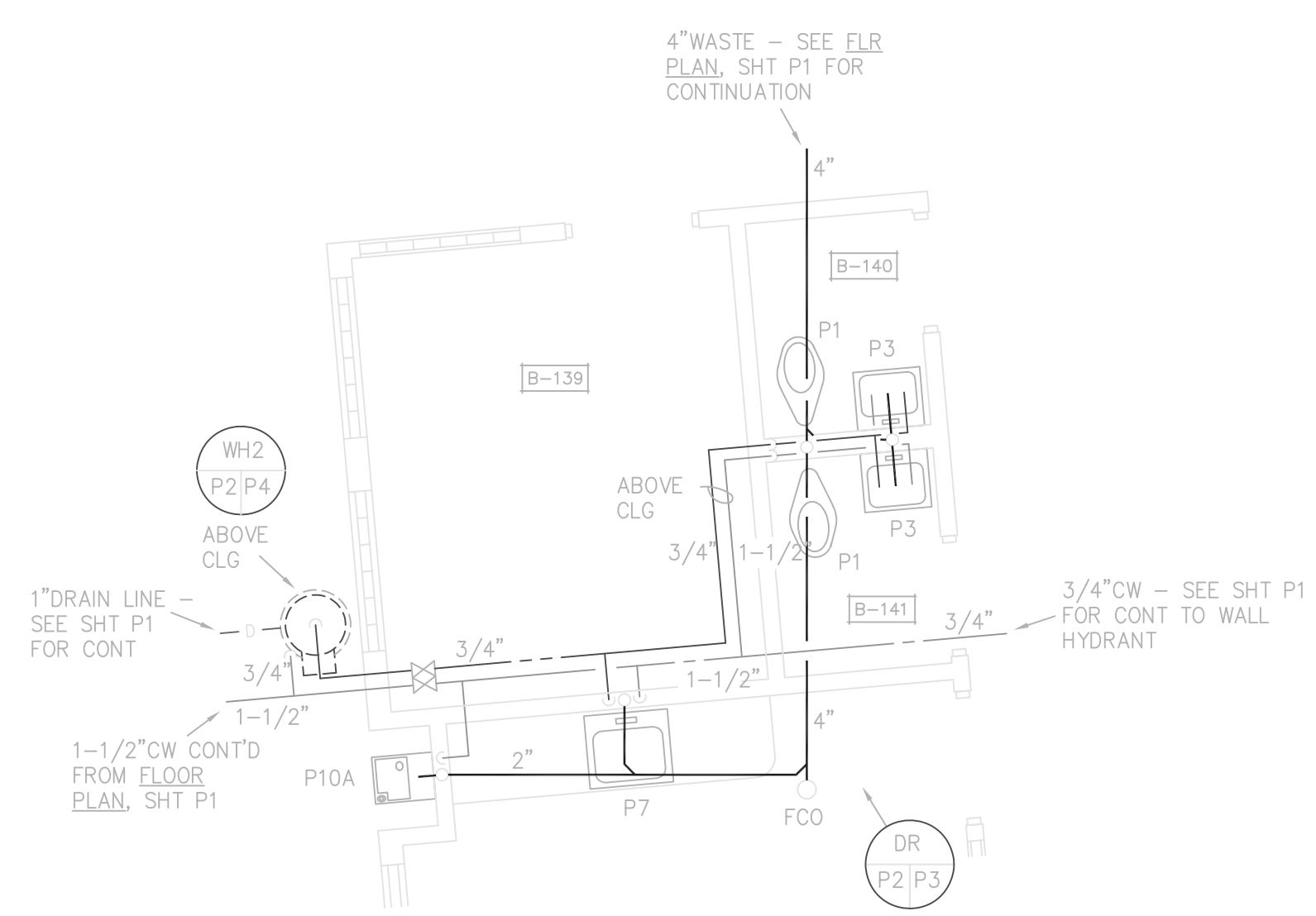
**A** PARTIAL PLUMBING PLAN  
P1|P2 SCALE: 1/4" = 1'-0"



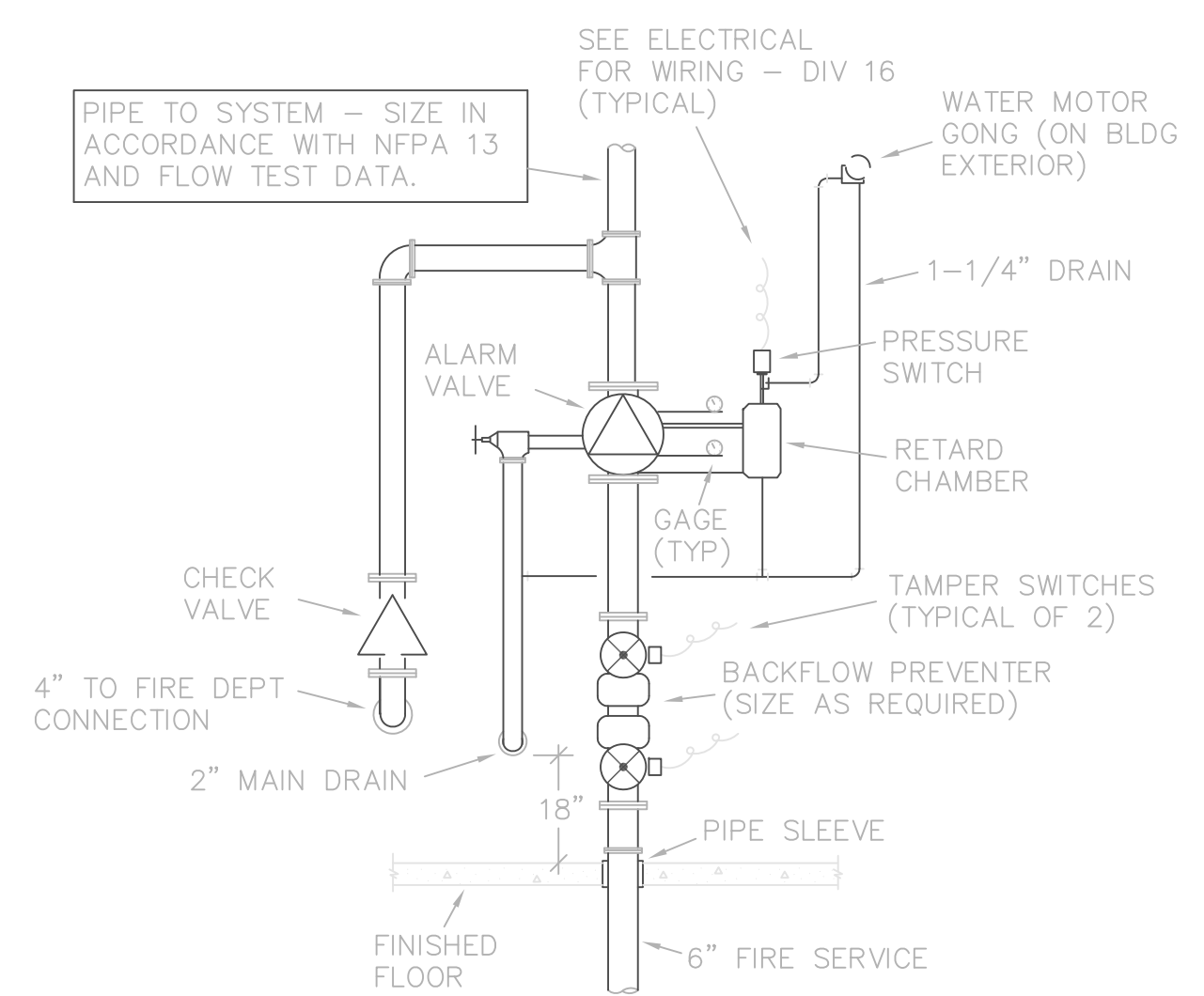
**B** PARTIAL PLUMBING PLAN  
P1|P2 SCALE: 1/4" = 1'-0"



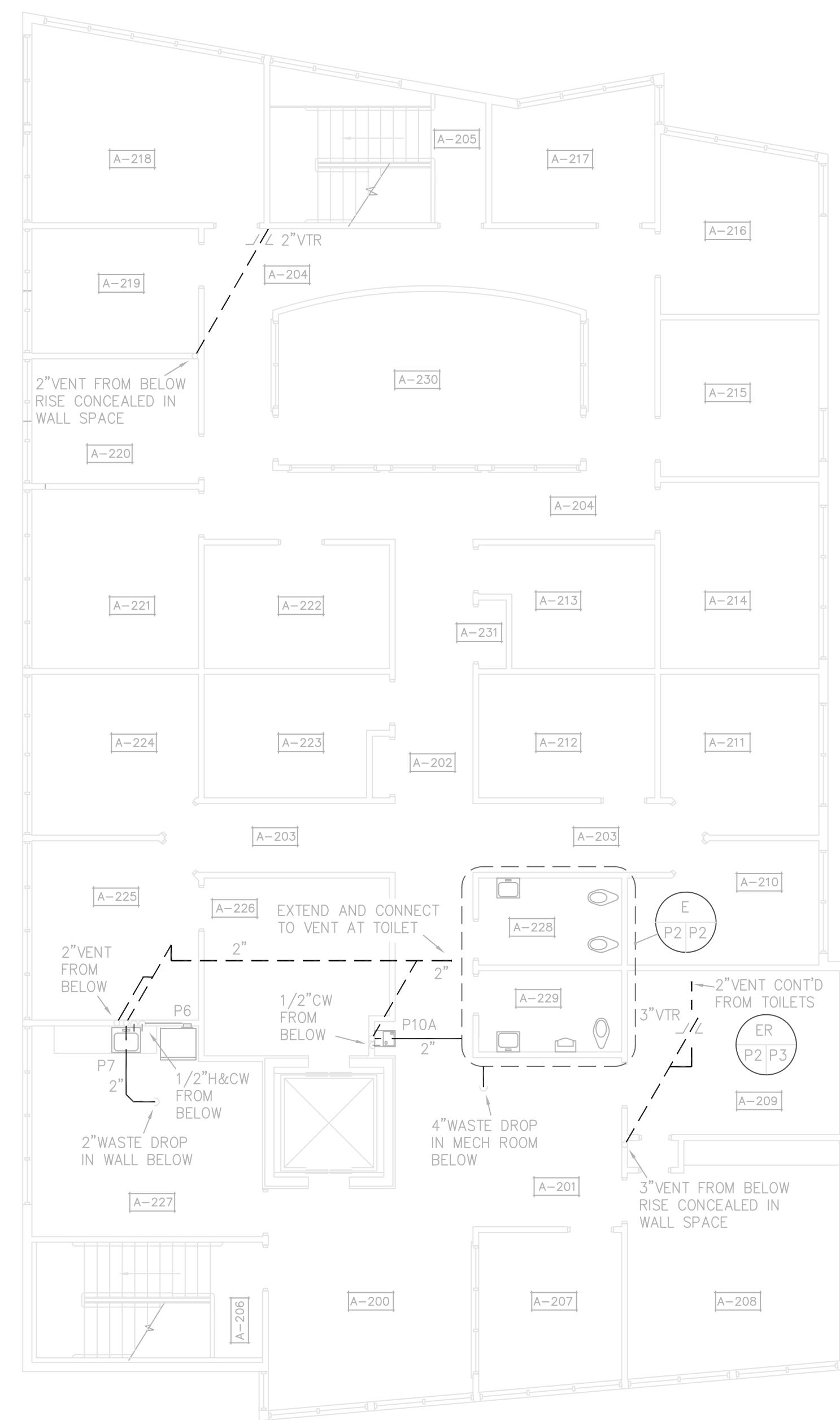
**C** PARTIAL PLUMBING PLAN  
P1|P2 SCALE: 1/4" = 1'-0"



**D** PARTIAL PLUMBING PLAN  
P1|P2 SCALE: 1/4" = 1'-0"

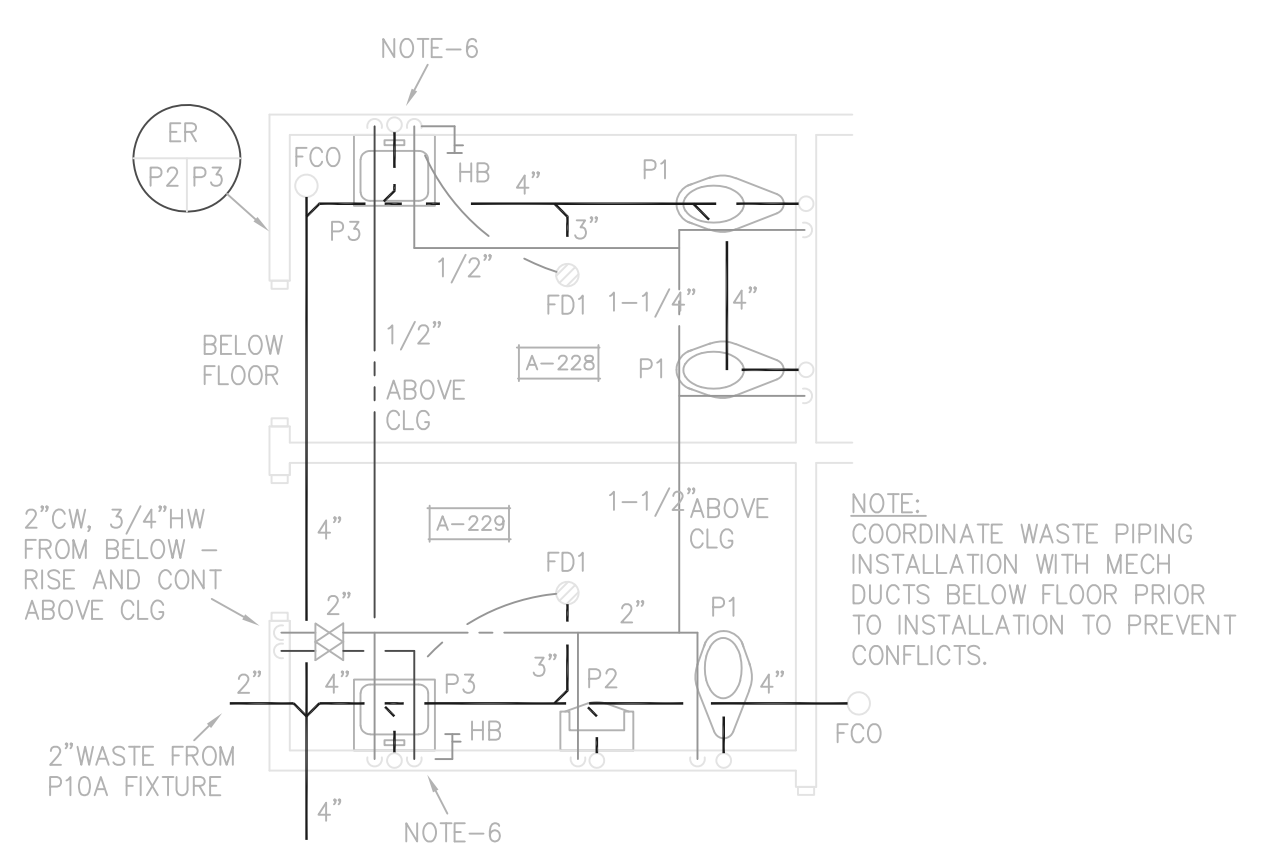


**AV** SPRINKLER ALARM VALVE RISER  
P2|P2 NO SCALE

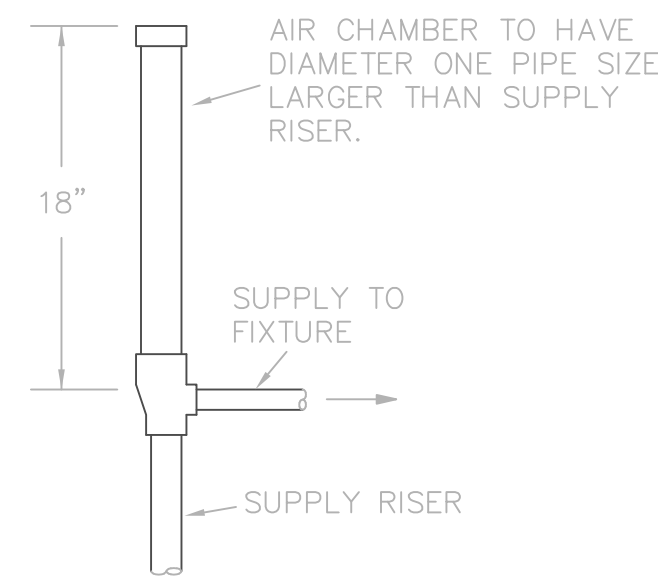


**SECOND FLOOR PLUMBING PLAN**  
SCALE: 1/8" = 1'-0"

- WET PIPE SPRINKLER SYSTEM NOTES**
- DO NOT SCALE DRAWINGS. ROUGH FROM ARCHITECTURAL AND EQUIPMENT MANUFACTURER'S DRAWINGS. COORDINATE CEILING FINISHES AND HEIGHTS AS APPLICABLE.
  - ALL WORK AND MATERIALS SHALL BE IN ACCORDANCE WITH NFPA PAMPHLET 13 AND ALL APPLICABLE LOCAL CODES AND ORDINANCES.
  - COORDINATE SPRINKLER SYSTEMS WITH ALL TRADES TO AVOID INTERFERENCE AND CONFLICTS PRIOR TO INSTALLATION OF PIPING, VALVES, AND EQUIPMENT.
  - LOCATE VALVES TO PERMIT EASY ACCESSABILITY AND IN ACCORDANCE WITH NFPA-13.
  - WHENEVER THE WORD "PROVIDE" IS USED, IT SHALL MEAN FURNISH AND INSTALL COMPLETE AND READY FOR USE.
  - UNLESS OTHERWISE SHOWN OR NOTED, ALL PIPING SHALL BE RUN CONCEALED IN WALLS, CHASES, AND/OR ABOVE CEILINGS.
  - PROVIDE SPRINKLER COVERAGE THROUGHOUT BLDG IN ACCORDANCE WITH SPECIFICATIONS AND NFPA PAMPHLET 13.

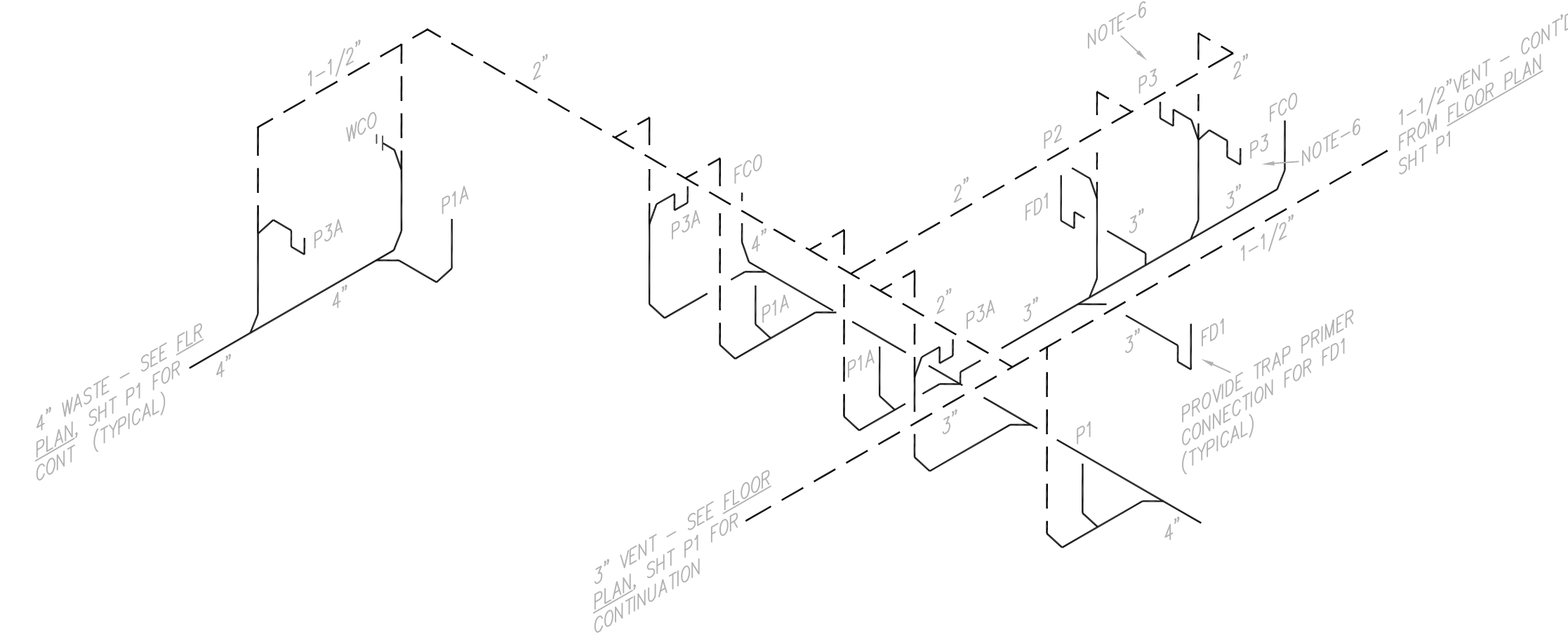


**E** PARTIAL PLUMBING PLAN  
P2|P2 SCALE: 1/4" = 1'-0"

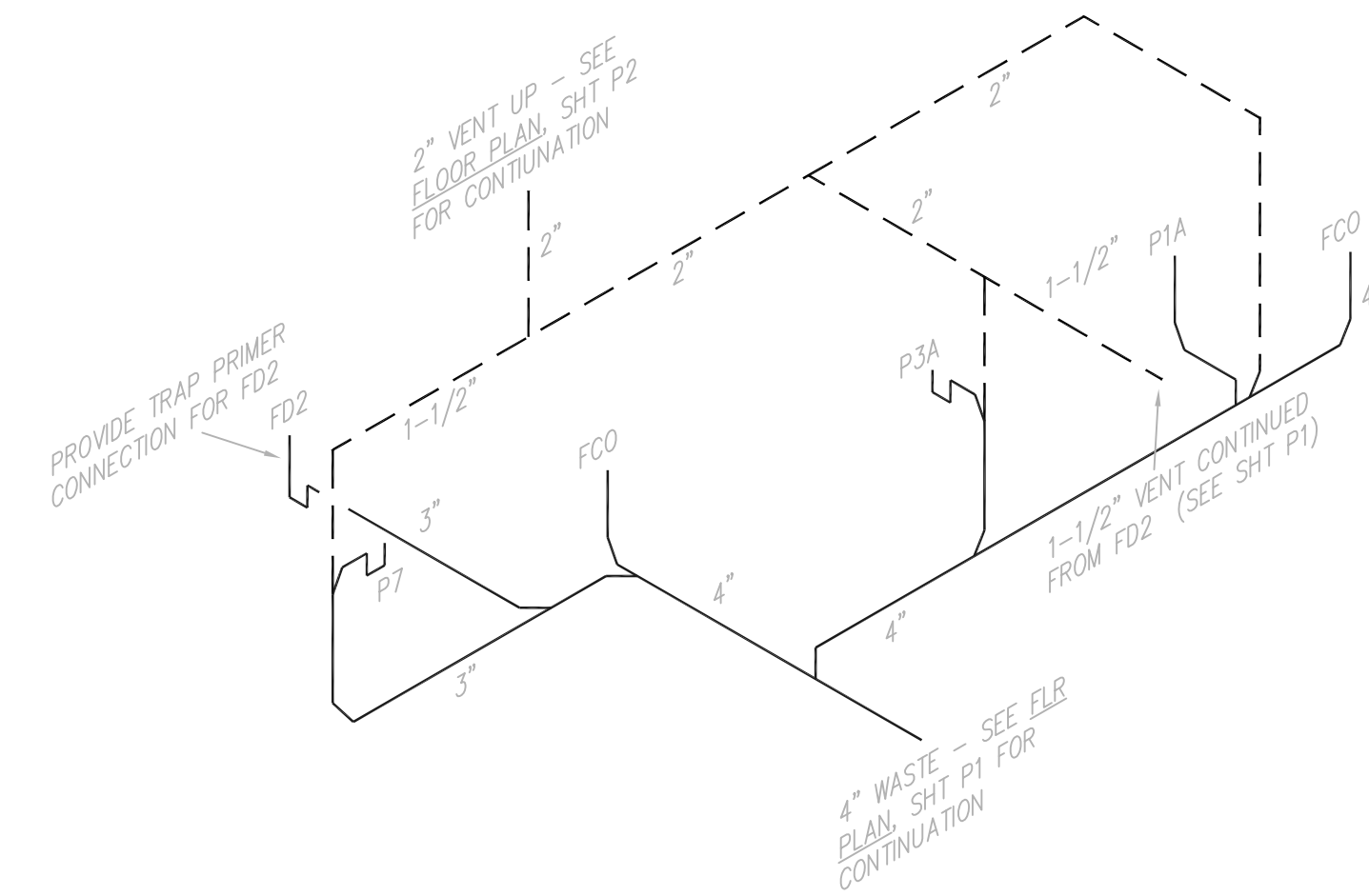


**AIR CHAMBER DETAIL**

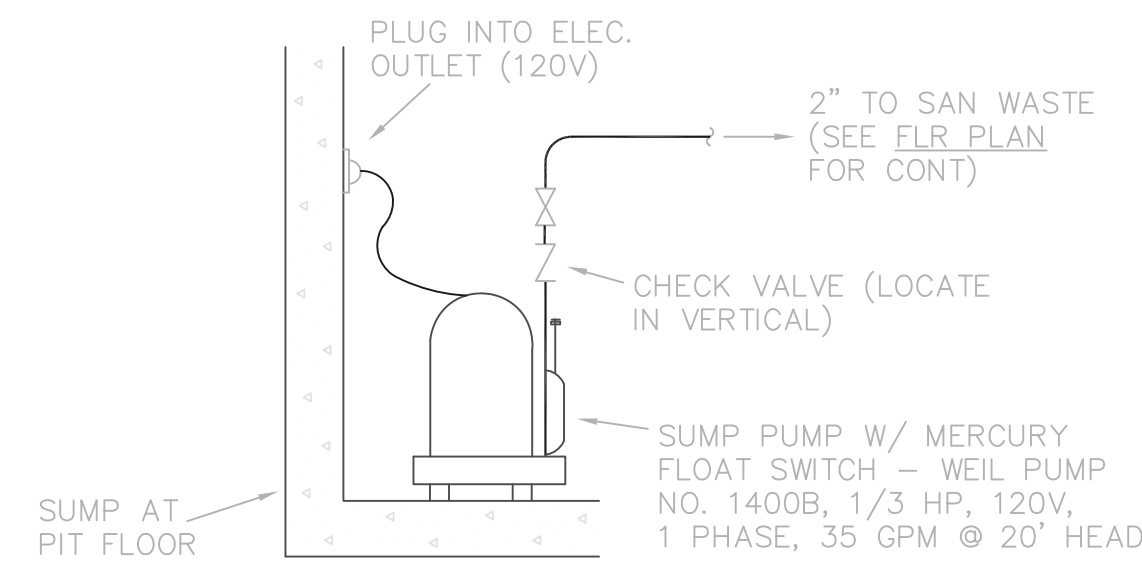
NO SCALE  
 NOTE: PROVIDE AIR CHAMBER ON HOT AND COLD WATER SUPPLY TO EACH FIXTURE.



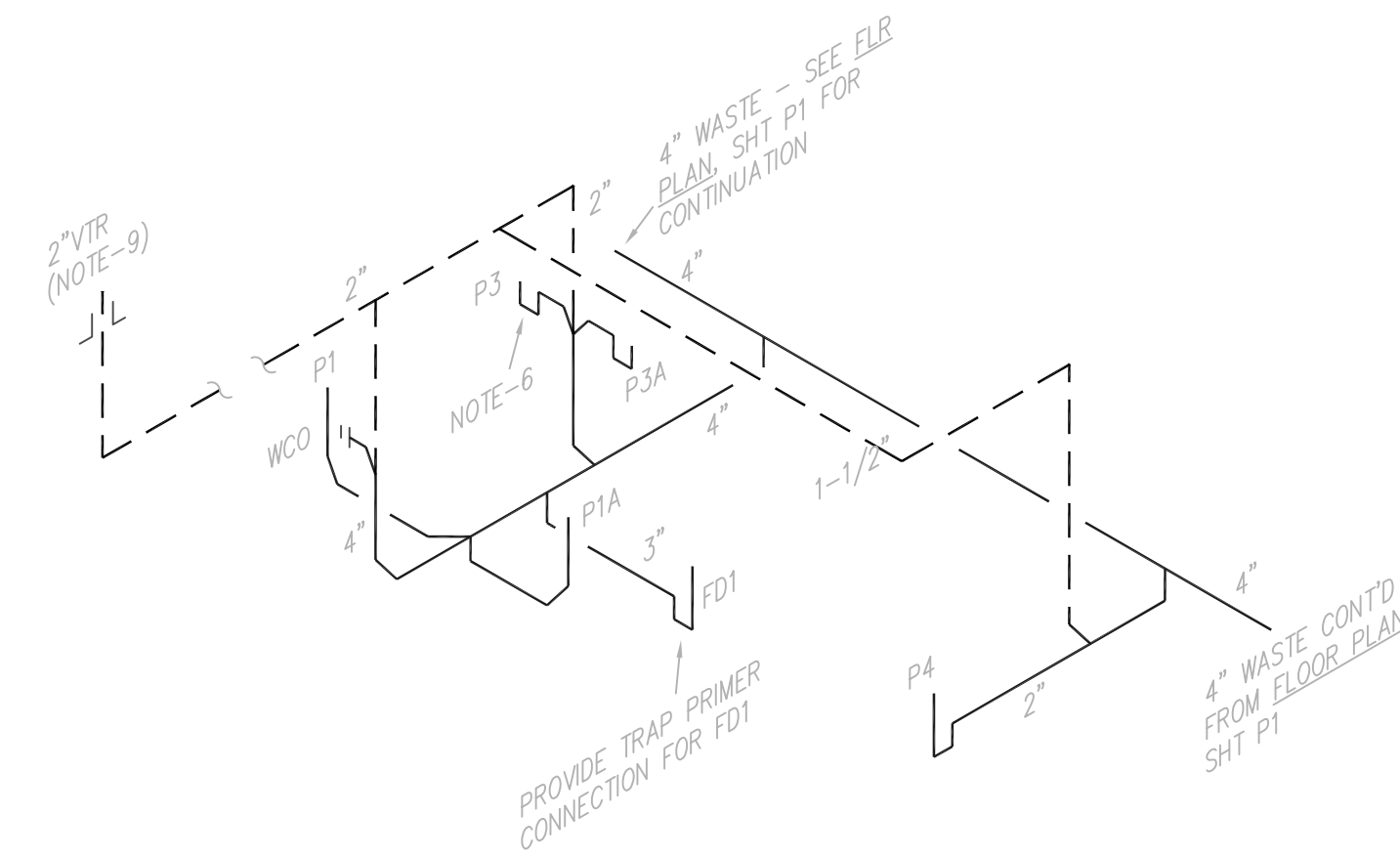
**AR** WASTE AND VENT RISER DIAGRAM  
 P2|P3 SCHEMATIC



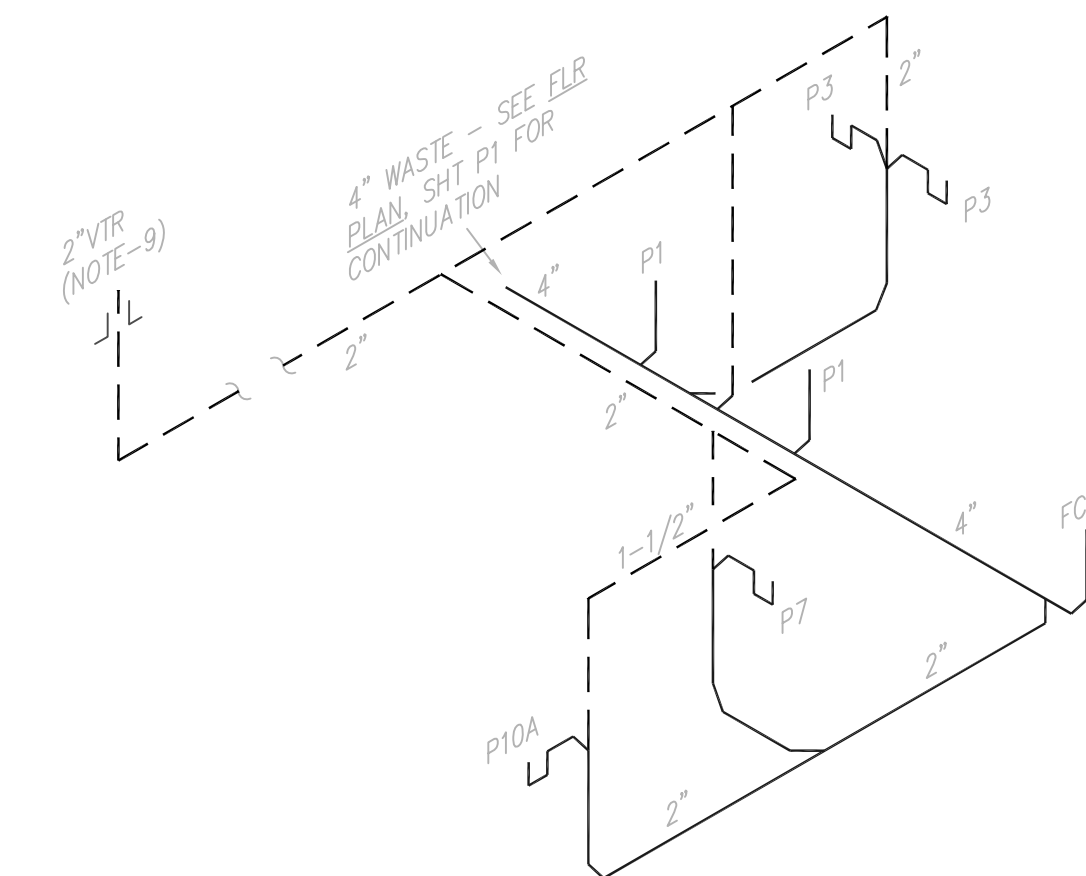
**BR** WASTE AND VENT RISER DIAGRAM  
 P2|P3 SCHEMATIC



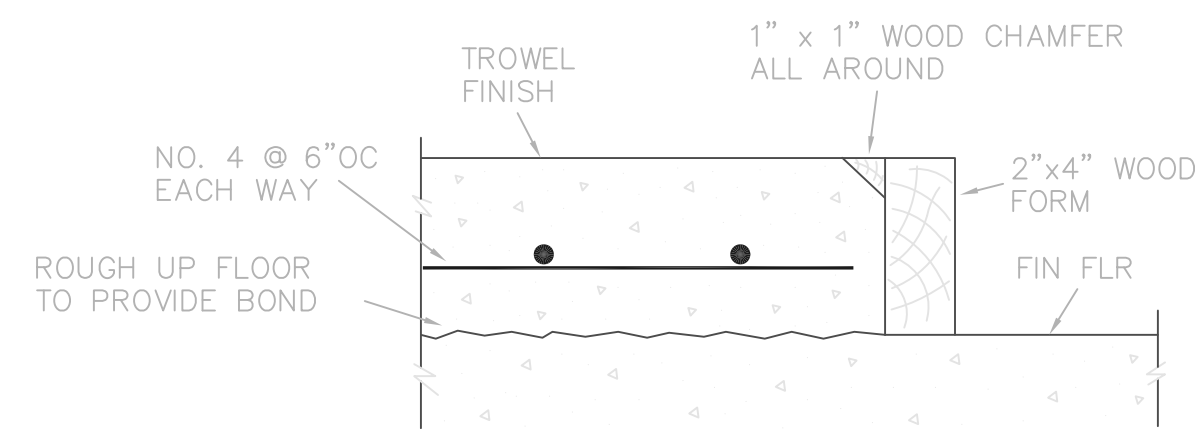
**SP** SUMP PUMP DETAIL  
 P1|P3 NOT TO SCALE



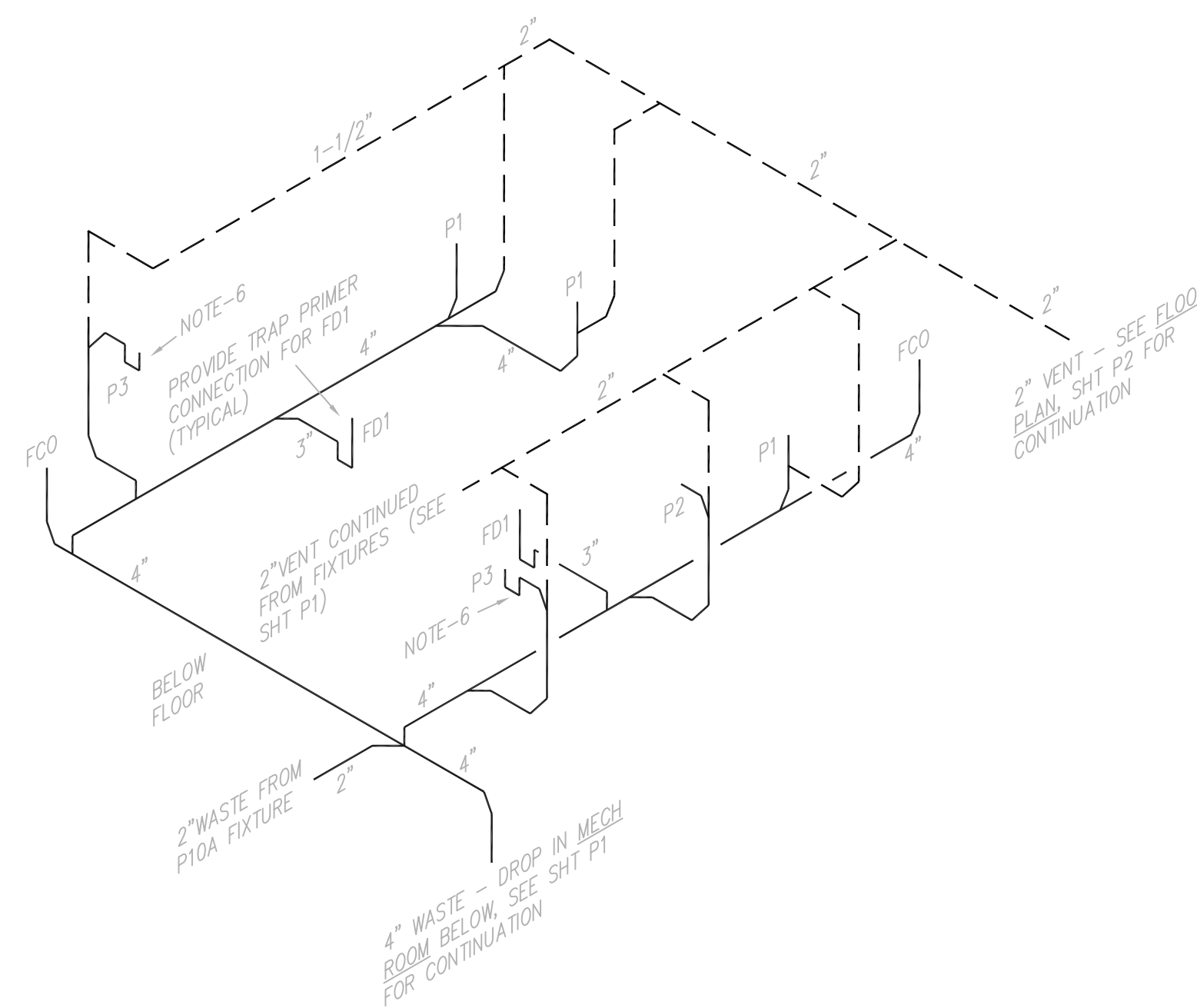
**CR** WASTE AND VENT RISER DIAGRAM  
 P2|P3 SCHEMATIC



**DR** WASTE AND VENT RISER DIAGRAM  
 P2|P3 SCHEMATIC



**CP** CONCRETE PAD DETAIL  
 P4|P3 NOT TO SCALE



**ER** WASTE AND VENT RISER DIAGRAM  
 P2|P3 SCHEMATIC



Drakeford Architects

120 North Main Street  
 Sumter SC 29150 803 775-6567

Date October 1993

Revisions

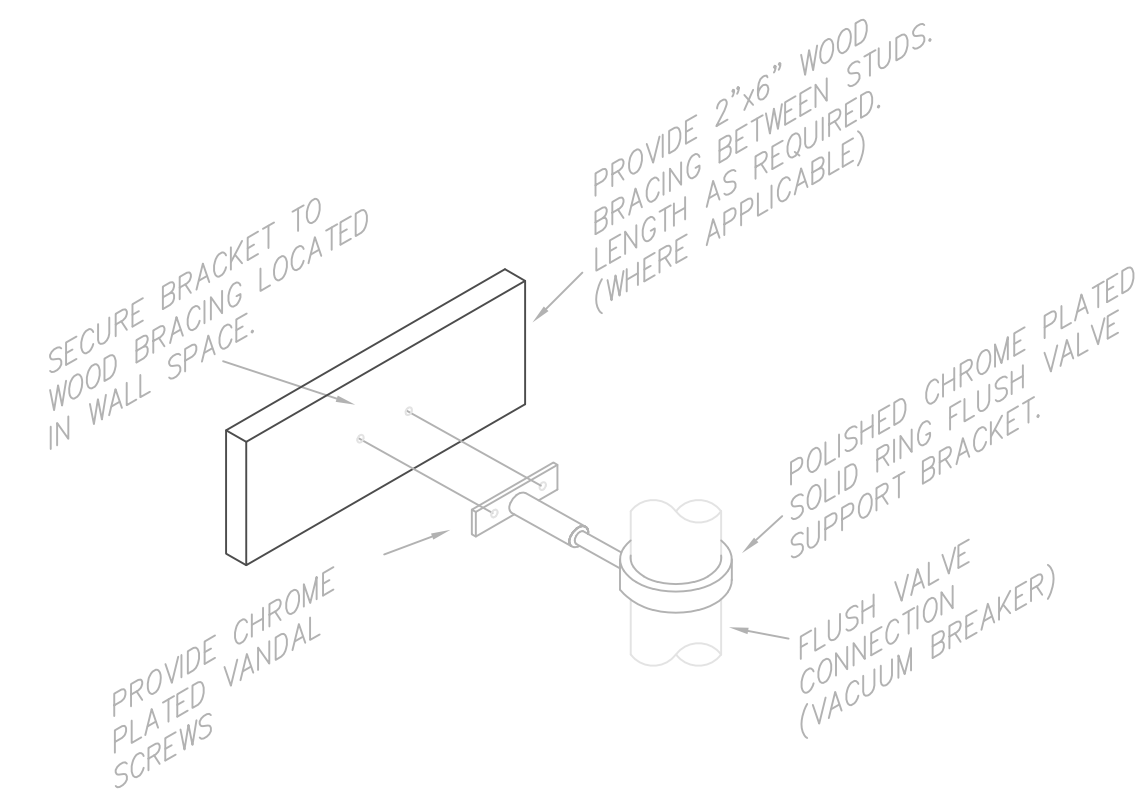
Coastal Empire-  
 Beaufort CMHC  
 Facility

Beaufort, S.C.

Project No. J12-9565-PM

Plumbing Waste  
 and Vent Riser  
 Diagrams

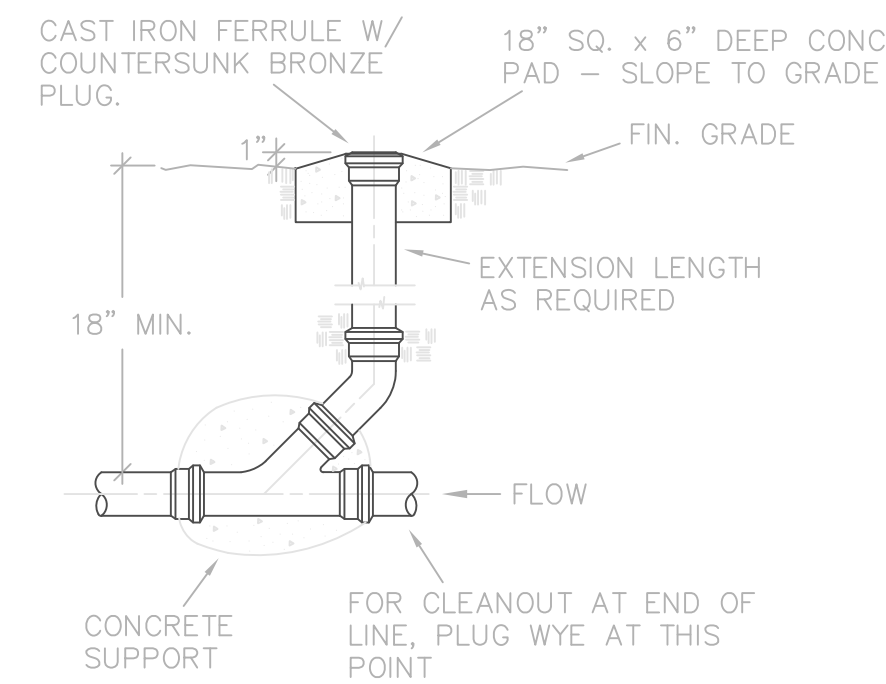
Scale: None



**FLUSH VALVE PIPE SUPPORT DETAIL**

SCHEMATIC

NOTE: PROVIDE FLUSH VALVE SUPPORT BRACKETS ON ALL FIXTURE FLUSH VALVES.



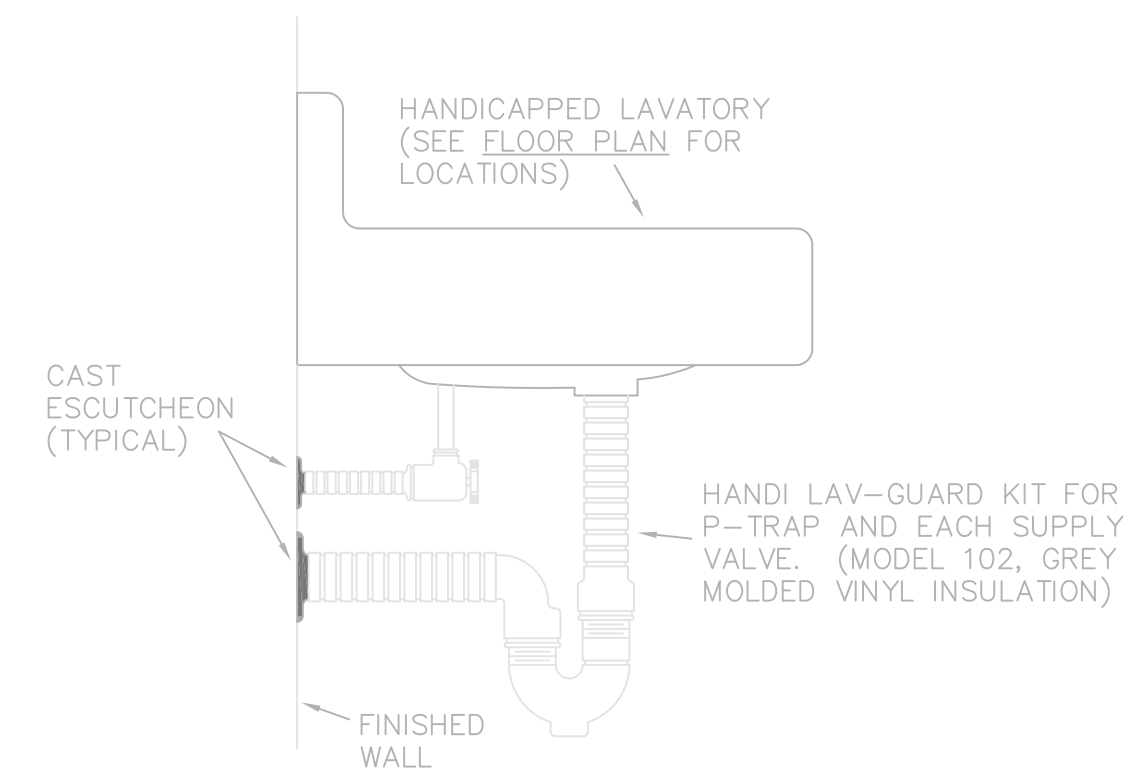
**GRADE CLEANOUT DETAIL**

NOT TO SCALE

| PLUMBING FIXTURE SCHEDULE |                       |      |      |       |        |                 |
|---------------------------|-----------------------|------|------|-------|--------|-----------------|
| SYMBOL                    | DESCRIPTION           | CW   | HW   | WASTE | VENT   | MOUNTING HEIGHT |
| P1                        | WATER CLOSET          | 1"   | ---  | 4"    | 2"     | 15"             |
| P1A                       | HDC'D WATER CLOSET    | 1"   | ---  | 4"    | 2"     | 18"             |
| P2                        | URINAL                | 1"   | ---  | 2"    | 1-1/2" | 24"             |
| P3                        | LAVATORY              | 1/2" | 1/2" | 2"    | 1-1/2" | 31"             |
| P3A                       | HDC'D LAVATORY        | 1/2" | 1/2" | 2"    | 1-1/2" | 33"             |
| P4                        | SHOWER UNIT           | 1/2" | 1/2" | ---   | ---    | *               |
| P5                        | 2-COMP SINK           | 1/2" | 1/2" | 2"    | 1-1/2" | SEE ARCH        |
| P6                        | ICE MAKER BOX         | 1/2" | ---  | ---   | ---    | 24"             |
| P7                        | 1-COMP SINK           | 1/2" | 1/2" | 2"    | 1-1/2" | SEE ARCH        |
| P8                        | 24"x24" JAN SINK      | 1/2" | 1/2" | 3"    | 1-1/2" | **              |
| P9                        | 24"x20" JAN SINK      | 1/2" | 1/2" | 3"    | 1-1/2" | ---             |
| P10                       | ELECTRIC WATER COOLER | 1/2" | ---  | 2"    | 1-1/2" | 40"             |
| P10A                      | HDC'D EWC             | 1/2" | ---  | 2"    | 1-1/2" | ***             |
| HB                        | HOSEBIBB, TOILET      | 1/2" | ---  | ---   | ---    | 16"             |
| WH                        | WALL HYDRANT          | 3/4" | ---  | ---   | ---    | 18"             |

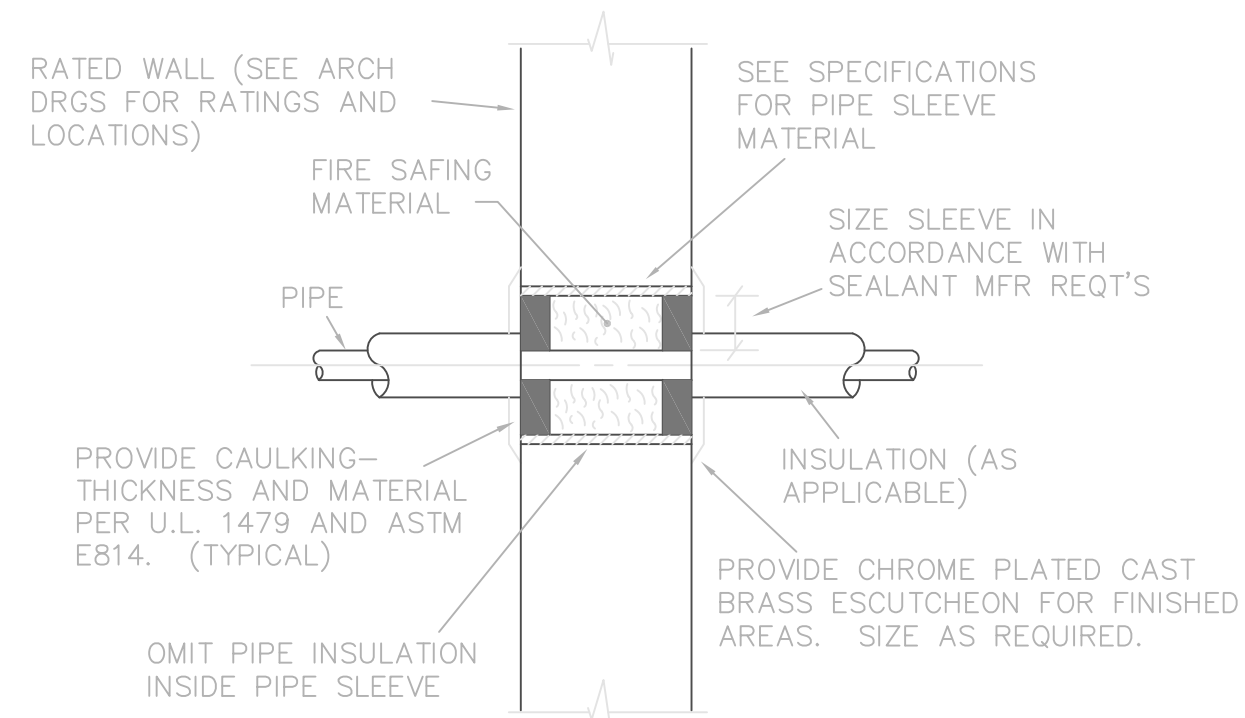
\*MOUNT SHOWER HEAD 78" AFF.  
 \*\*MOUNT FAUCET 48" AFF.  
 \*\*\*MOUNT 36" AFF TO BUBBLER FOR ADA REQUIREMENT.

- PLUMBING NOTES**
- DO NOT SCALE DRAWINGS. ROUGH FROM ARCHITECTURAL AND EQUIPMENT MFR'S DRAWINGS.
  - COORDINATE PLUMBING SYSTEMS WITH ALL TRADES TO AVOID INTERFERENCE AND CONFLICTS PRIOR TO INSTALLATION OF PIPING, FIXTURES, AND EQUIPMENT.
  - ALL WORK AND MATERIALS SHALL BE IN ACCORDANCE WITH THE SBCCI STANDARD PLUMBING AND BUILDING CODES AND ALL LOCAL CODES AND ORDINANCES.
  - WHENEVER THE WORD "PROVIDE" IS USED, IT SHALL MEAN FURNISH AND INSTALL COMPLETE AND READY FOR USE.
  - UNLESS OTHERWISE SHOWN OR NOTED, ALL PIPING SHALL BE RUN CONCEALED IN WALLS, CHASES AND/OR ABOVE CEILINGS.
  - PROVIDE J.R. SMITH 2698 POLISHED CHROME PLATED P-TRAP TRAP PRIMER AND CONNECT TO FLOOR DRAIN IN TOILET. NO JOINTS SHALL BE INSTALLED BELOW SLAB.
  - PROVIDE AIR CHAMBERS ON HOT AND COLD WATER SUPPLY TO EACH FIXTURE. SIZE ONE PIPE SIZE LARGER THAN SUPPLY. (SEE DETAIL)
  - LOCATE GATE VALVES ABOVE CEILING TO PERMIT EASY ACCESS. (SEE NOTE-2)
  - PROVIDE ALL VENT PENETRATIONS WHERE INDICATED ON FLOOR PLANS. COLLECT ALL VENTS ABOVE CEILING WHERE SHOWN. COORDINATE VENT PENETRATION LOCATIONS WITH ARCHITECT PRIOR TO INSTALLATION.
  - CONTRACTOR SHALL PROVIDE A MINIMUM 10"x10" CEILING ACCESS PANEL FOR ALL VALVES ABOVE THE CEILING. COORDINATE LOCATIONS WITH VALVES AS NECESSARY.
  - CONTRACTOR SHALL EXTEND 6" SEWER AND CONNECT TO EXISTING SANITARY MANHOLE. (SEE SHT SA-2 FOR LOCATION) LOCATE GRADE CLEANOUTS MAXIMUM 75' ON CENTER.
  - CONTRACTOR SHALL EXTEND 2-1/2" DOMESTIC WATER LINE AND CONNECT TO 2" METER AND TAP BY CITY OF BEAUFORT WATER DEPARTMENT. (SEE SHT SA-2 FOR LOCATION) PROVIDE 2" BFP IN CI BOX AT METER AS DIRECTED BY WATER UTILITY CO.
  - INSTALLATION OF EQUIPMENT AND PIPING SHALL COMPLY WITH SBCCI STANDARD BUILDING CODE FOR SEISMIC PROTECTION FOR ZONE-2.



**P-TRAP INSULATION DETAIL**

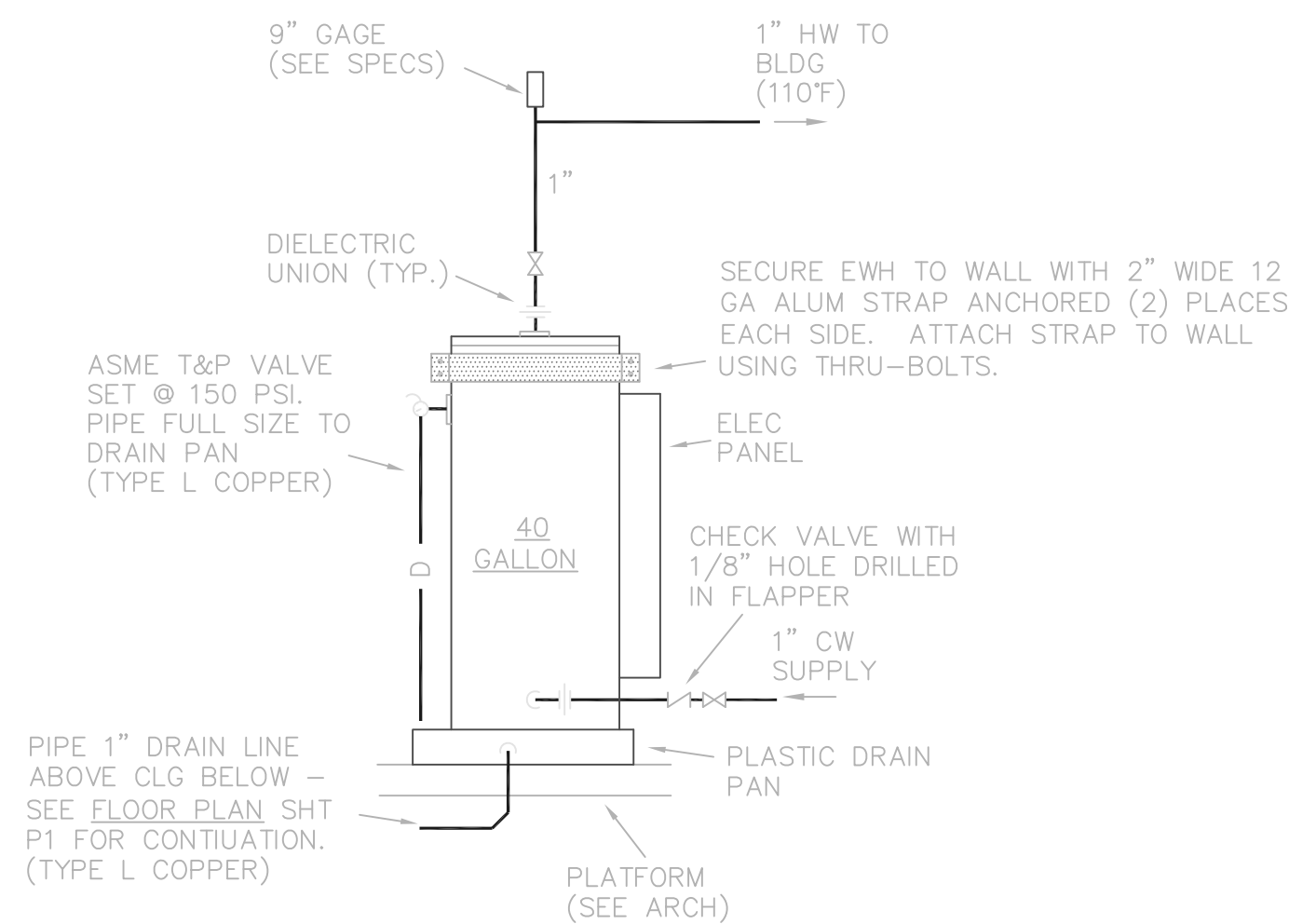
NO SCALE



**PIPE THRU RATED WALL DETAIL**

NOT TO SCALE

NOTE: PROVIDE DATA SHEETS FOR CAULKING MATERIALS FOR REVIEW. FAILURE TO COMPLY PRIOR TO INSTALLATION OF ANY CAULKING MATERIALS SHALL REQUIRE THE REMOVAL OF ALL PIPE CAULK MATERIALS.



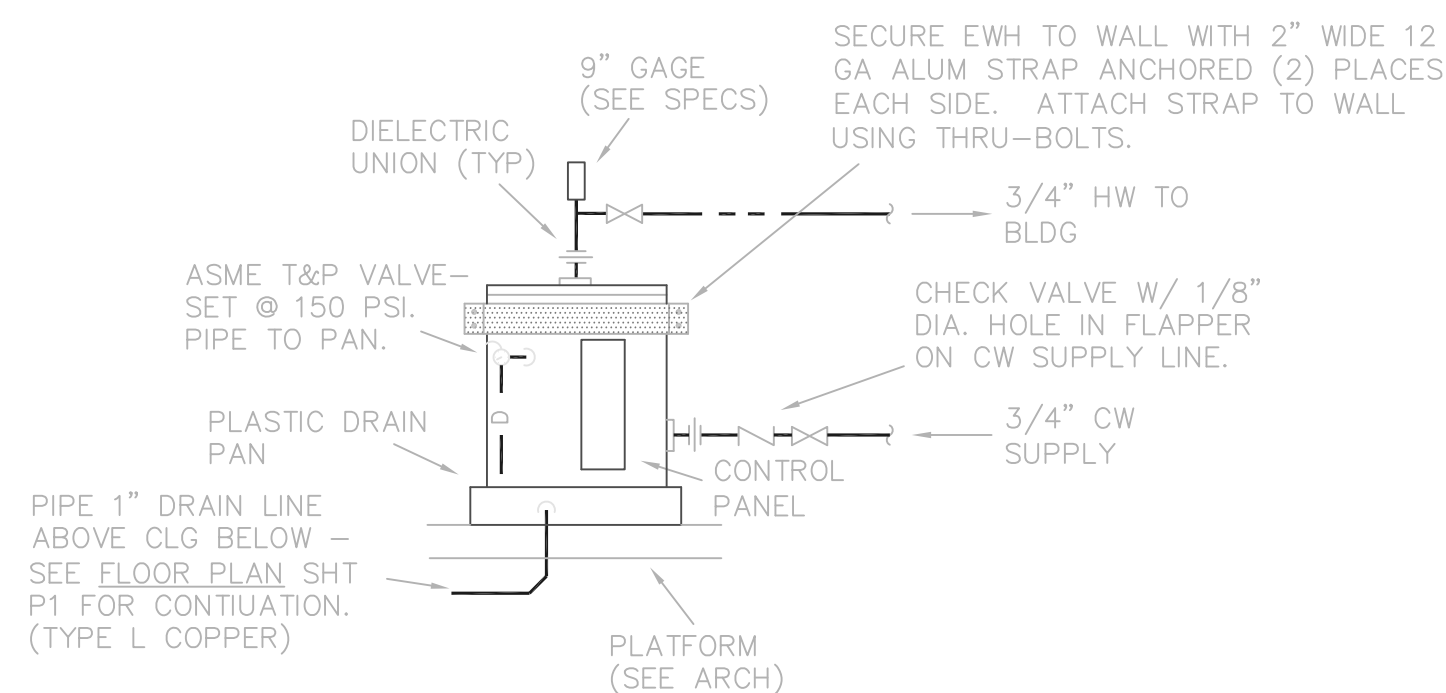
**ELECTRIC WATER HEATER NO. 1 DETAIL**

NOT TO SCALE

STATE NO. SB6-40-6IFE-ASME, 40 GAL STORAGE, 6.0 KW INPUT, ASME CONSTRUCTION. SEE ELECTRICAL DRGS FOR VOLTAGE REQUIREMENTS.

**PLUMBING SYMBOLS**

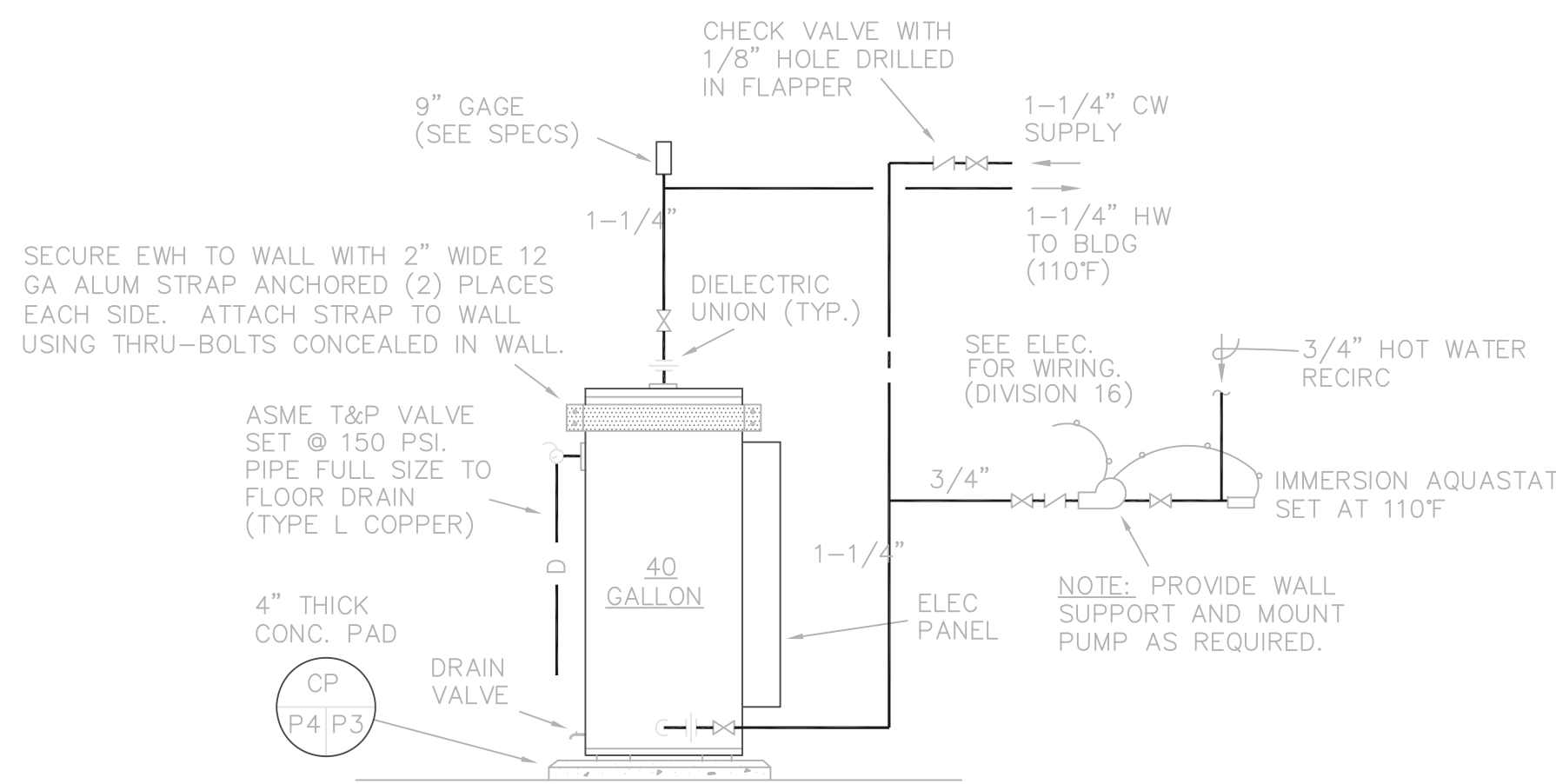
| SYMBOL  | DESCRIPTION             |
|---------|-------------------------|
| —       | SANITARY WASTE PIPING   |
| - - - - | VENT PIPING             |
| ---     | COLD WATER PIPING       |
| ---     | HOT WATER PIPING        |
| ---     | HOT WATER RECIRC PIPING |
| ⊗       | GATE VALVE              |
| ⊗       | GATE VALVE IN CI BOX    |
| ○       | FLOOR CLEANOUT          |
| ○       | GRADE CLEANOUT          |
| ⊗       | FLOOR DRAIN - TOILET    |
| ⊗       | FLOOR DRAIN - MECHROOM  |
| ⊥       | WALL HYDRANT            |
| ⊥       | HOSEBIBB, TOILET        |
|         | CLEANOUT                |
|         | WALL CLEANOUT           |
| BFP     | BACKFLOW PREVENTER      |
| EWC     | ELECTRIC WATER COOLER   |
| VTR     | VENT THROUGH ROOF       |
| HDC'D   | HANDICAPPED             |
| AFG     | ABOVE FINISHED GRADE    |
| AFF     | ABOVE FINISHED FLOOR    |
| O.C.    | ON CENTER               |



**ELECTRIC WATER HEATER NO. 2 DETAIL**

NOT TO SCALE

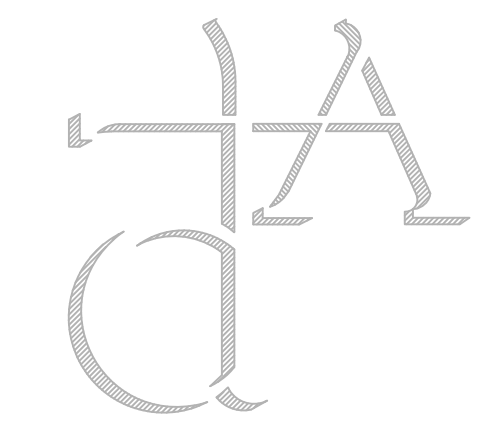
STATE NO. SB6-6-3IFE-ASME, 6 GAL STORAGE, 3.0 KW INPUT, ASME CONSTRUCTION. SEE ELECTRICAL DRGS FOR VOLTAGE REQUIREMENTS.



**ELECTRIC WATER HEATER NO. 3 DETAIL**

NOT TO SCALE

STATE NO. SB6-40-3IFE-ASME, 40 GAL STORAGE, 3.0 KW INPUT, ASME CONSTRUCTION. SEE ELECTRICAL DRGS FOR VOLTAGE REQUIREMENTS.



Drakeford Architects

120 North Main Street  
 Sumter SC 29150 803 775-6567

Date October 1993

Revisions

Coastal Empire-  
 Beaufort CMHC  
 Facility

Beaufort, S.C.

Project No. J12-9565-PM

Plumbing Details  
 and Schedules

Scale: None